

# FABRICS

ELEGANZA DEI TESSUTI ITALIANI

*THE ITALIAN ELEGANCE OF SILKY TOUCH*



**LOGGIA**



# FABRICS

## ELEGANZA DEI TESSUTI ITALIANI THE ITALIAN ELEGANCE OF SILKY TOUCH

**IT** La linea **Fabrics | Italian Elegance** comprende la gamma degli effetti decorativi che richiamano l'eleganza e la texture dei tessuti italiani setosi, vellutati, damascati. Dal fascino del Velluto Fiorentino, alle trame pregiate dell'effetto Seta D'Autore, alla texture damascata del Montenapoleone ed i riflessi cangianti del Vanesia, fino al design discromico e moderno del Moquette anche per il flooring.

Una gamma decor completa per ricreare ambienti raffinati e dalle finiture delicate.

**EN** The **Fabrics | Italian Elegance** includes the range of decorative effects that recall the elegance and texture of silky, velvety and damask fabrics made in Italy. From the charm of Velluto Fiorentino, to the precious textures of the Seta D'Autore, to the damask texture of Montenapoleone and the iridescent reflections of Vanesia, up to the discolored and modern design of the Moquette also for flooring.

A complete decor range to recreate refined environments with delicate finishes.

**FR** La ligne **Tissus | Italian Elegance** comprend la gamme d'effets décoratifs qui rappellent l'élégance et la texture des tissus soyeux, veloutés et damassés.

Du charme du Velluto Fiorentino, aux textures précieuses de l'effet Seta D'Autore, en passant par la texture damassée de Montenapoleone et les reflets irisés de Vanesia, jusqu'au design décoloré et moderne du Moquette également pour le sol.

Une gamme de décoration complète pour recréer des environnements raffinés aux finitions délicates.

**SP** La línea de **Telas | Italian Elegance** incluye la gama de efectos decorativos que recuerdan la elegancia y la textura de los tejidos sedosos, aterciopelados y adamascados.

Desde el encanto del Velluto Fiorentino, pasando por las preciosas texturas del efecto Seta D'Autore, pasando por la textura damascada de Montenapoleone y los reflejos iridiscentes de Vanesia, hasta el diseño descolorido y moderno de la Moquette también para pavimento.

Una gama decorativa completa para recrear ambientes refinados con acabados delicados.



PRODOTTI  
VOC FREE  
VOC FREE PRODUCT



DESIGN  
VERSATILE  
VERSATILE DESIGN



APPLICABILE  
SPATOLA | PENNELLO  
TROWEL | BRUSH



APPLICABILE  
INTERNO  
INDOOR



ELEVATA  
LAVORABILITÀ  
HIGH WORKABILITY



COLORI  
DI CARTELLA  
COLOR CHART



### VELLUTO FIORENTINO

THE DESIGN OF VELVET EFFECT

La maestria artigianale Italiana per una texture morbida e opaca, fascino elegante e senza tempo.

*All the Italian craftsmanship for a soft and matte texture, elegant and timeless charm.*



Cod. A1681120

### MONTENAPOLEONE

THE DESIGN OF DAMASK EFFECT

Un'eleganza che non passa inosservata, una profondità tattile che ridefinisce ogni ambiente in uno spazio sofisticato.

*An elegance that does not go unnoticed, a tactile depth that redefines every environment into a sophisticated space.*



Cod. A1451110

### SETA D'AUTORE

THE DESIGN OF SILKY EFFECT

Delicatezza raffinata per uno stile minimalista e di charm, che trasforma l'ambiente in un'oasi di tranquillità e sobria eleganza.

*A refined delicacy and a minimalist style that transforms the environment into an oasis of tranquility and simple elegance.*



Cod. A6701180

### VANESIA

THE DESIGN OF IRIDESCENT EFFECT

Una celebrazione di luce e colore, che crea un'atmosfera viva e dinamica, donando all'ambiente un fascino contemporaneo.

*A celebration of light and color, which creates a lively and dynamic atmosphere, giving the environment a contemporary charm.*



Cod. A7801190

### MOQUETTE

THE DESIGN OF CARPET EFFECT

Un design esclusivo e ricercato, dove lo spazio comunica eleganza e raffinatezza creando un ambiente avvolgente.

*An exclusive and refined design, where the space communicates elegance and refinement, creating an enveloping environment.*



Cod. A3150780

# VELLUTO FIORENTINO

## THE DESIGN OF VELVET EFFECT

- IT** Rivestimento spatolato che crea una superficie morbida e vellutata al tatto, caratterizzata da una leggera iridescenza che cattura e riflette delicatamente la luce donando profondità e calore agli ambienti.
- EN** Troweled coating that creates a soft and velvety surface to the touch, characterized by a light iridescence that captures and reflects the light, offering a play of light and shadow that gives depth and warmth to the rooms.
- FR** Revêtement à la spatule qui crée une surface douce et veloutée au toucher, caractérisée par une légère irisation qui capte et reflète la lumière, offrant un jeu d'ombre et de lumière qui donne profondeur et chaleur aux environnements.
- SP** Revestimiento espátula que crea una superficie suave y aterciopelada al tacto, caracterizada por una ligera iridescencia que capta y refleja la luz, ofreciendo un juego de luces y sombras que otorga profundidad y calidez a los ambientes.

**Il suo utilizzo è indicato per:** Rivestimenti interni | Internal coverings | Revêtements internes | Revestimientos internos



Velluto Fiorentino: cod. A1681610 F05 718-D

Un'atmosfera calda e accogliente, uno stile senza tempo.

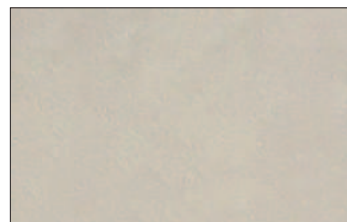
*A refined and at the same time essential style.*



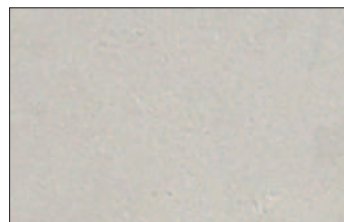
Velluto Fiorentino: cod. A1681610

## COLOR SELECTION | TRENDY BROWN

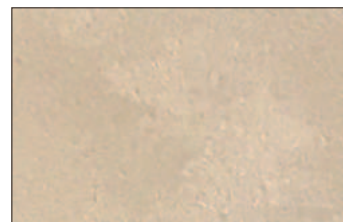
Fabrics | Italian Elegance



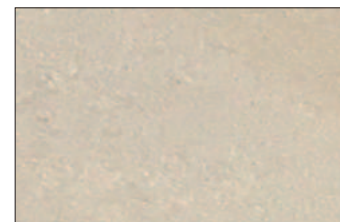
\*\*\*\*1300 BIANCO



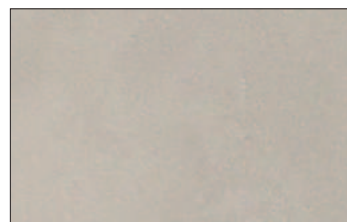
\*\*\*\*0750 F05 28-P



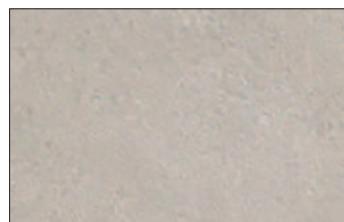
\*\*\*\*0700 F05 102-P



\*\*\*\*1160 BIANCO



\*\*\*\*1310 F05 1182-P



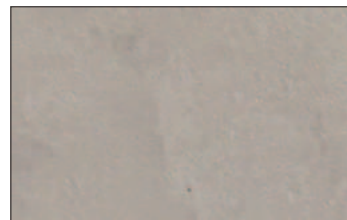
\*\*\*\*0760 F05 72-P



\*\*\*\*0710 F05 122-P



\*\*\*\*1170 F05 1064-P



\*\*\*\*1320 F05 1184-P



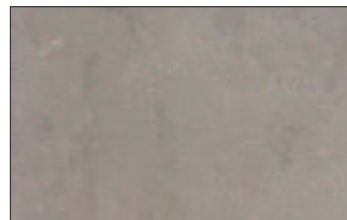
\*\*\*\*0770 F05 68-P



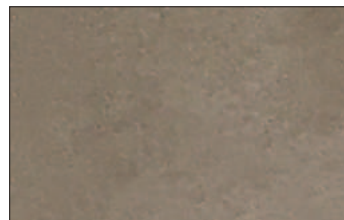
\*\*\*\*0720 F05 128-P



\*\*\*\*1180 F05 1094-P



\*\*\*\*1330 F05 1204-P



\*\*\*\*0790 F05 1084-D



\*\*\*\*0730 F05 130-P



\*\*\*\*1190 F05 1114-D

Tutti i colori presenti in catalogo possono essere realizzati in: **Velluto Fiorentino | Montenapoleone | Vanesia | Seta D'Autore | Moquette.**  
 All the colors in the catalog can be made in | Toutes les couleurs du catalogue peuvent être réalisées en | Todos los colores del catálogo se pueden realizar en:  
**Velluto Fiorentino | Montenapoleone | Vanesia | Seta D'Autore | Moquette.**

Prodotti utilizzati: Velluto Fiorentino  
 Colori: cod. **A1681170**



# MONTENAPOLEONE

## THE DESIGN OF DAMASK EFFECT

- IT** Rivestimento spatolato dall'effetto damascato che crea un gioco di luci e ombre che si genera grazie alla texture della superficie, conferendo alle pareti dinamicità e personalità.
- EN** Troweled covering with a damask effect that creates a play of light and shadow that is generated thanks to the texture of the surface, giving the walls dynamism and personality.
- FR** Revêtement en spatule à effet damassé qui crée un jeu d'ombre et de lumière généré grâce à la texture de la surface, donnant aux murs dynamisme et personnalité.
- SP** Revestimiento espátula con efecto damasco que crea un juego de luces y sombras que se genera gracias a la textura de la superficie, aportando dinamismo y personalidad a las paredes.

**Il suo utilizzo è indicato per:** Rivestimenti interni | Internal coverings | Revêtements internes | Revestimientos internos



Montenapoleone: cod. A1451150 F05 1232-D

Tradizione e modernità  
in un equilibrio  
perfetto.

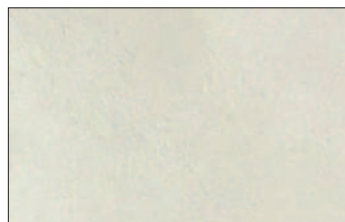
*Tradition and  
modernity in perfect  
balance.*



Montenapoleone: cod. A1451150

## COLOR SELECTION | SKY SHADES

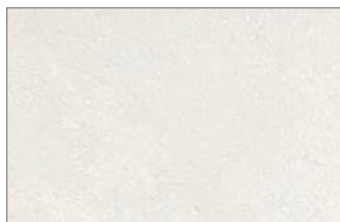
Fabrics | Italian Elegance



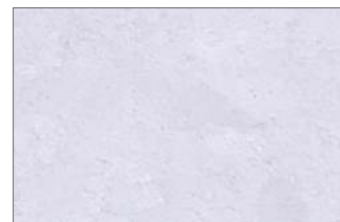
\*\*\*\*1240 BIANCO



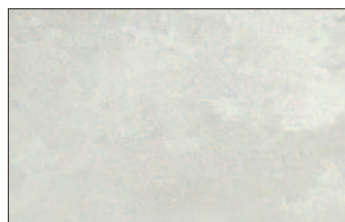
\*\*\*\*1110 F05 148-P



\*\*\*\*0450 F05 742-P



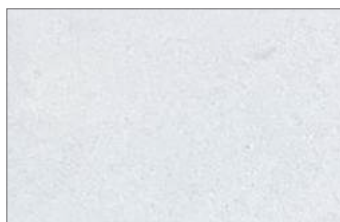
\*\*\*\*1270 F05 352-P



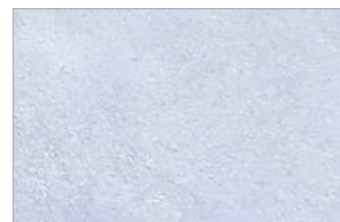
\*\*\*\*0650 F05 146-P



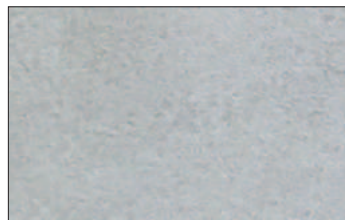
\*\*\*\*1120 F05 1192-P



\*\*\*\*1630 BIANCO



\*\*\*\*1280 F05 354-D



\*\*\*\*0660 F05 160-P



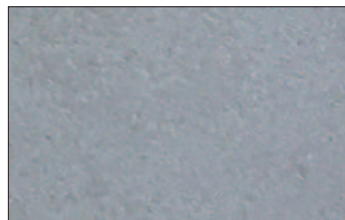
\*\*\*\*1130 F05 1202-P



\*\*\*\*0480 F05 784-P



\*\*\*\*0040 F05 772-P



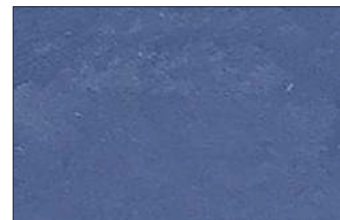
\*\*\*\*0680 F05 188-P



\*\*\*\*1140 F05 1222-P



\*\*\*\*0490 F05 794-P



\*\*\*\*0050 F05 5023

Tutti i colori presenti in catalogo possono essere realizzati in: **Velluto Fiorentino | Montenapoleone | Vanesia | Seta D'Autore | Moquette.**  
 All the colors in the catalog can be made in | Toutes les couleurs du catalogue peuvent être réalisées en | Todos los colores del catálogo se pueden realizar en:  
**Velluto Fiorentino | Montenapoleone | Vanesia | Seta D'Autore | Moquette.**



Prodotti utilizzati: Montenapoleone  
 Colori: cod. A1450040

# SETA D'AUTORE

## THE DESIGN OF SILKY EFFECT

- IT** Rivestimento spatolato che crea una superficie liscia e setosa al tatto, riflette la luce in modo delicato, trasformando le pareti in elementi raffinati e conferendo una luminosità soffusa e avvolgente.
- EN** Troweled coating with silky finish that creates a smooth and soft surface to the touch, reflects light delicately, transforming the walls into refined elements and giving a soft and enveloping brightness.
- FR** Revêtement à la spatule au fini soyeux qui crée une surface lisse et douce au toucher, reflète délicatement la lumière, transformant les murs en éléments raffinés et donnant une luminosité douce et enveloppante.
- SP** Revestimiento espátula con acabado sedoso que crea una superficie lisa y suave al tacto, refleja la luz con delicadeza, transformando las paredes en elementos refinados y aportando un brillo suave y envolvente.

**Il suo utilizzo è indicato per:** Rivestimenti interni | Internal coverings | Revêtements internes | Revestimientos internos



Seta D'Autore: cod. A6700780 F05 984-P

La texture raffinata  
della seta per un  
design sofisticato.

*The refined texture of  
silk for a sophisticated  
design.*



Seta D'Autore: cod. A6700780

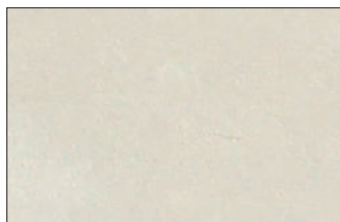
## COLOR SELECTION | WARM VIBES



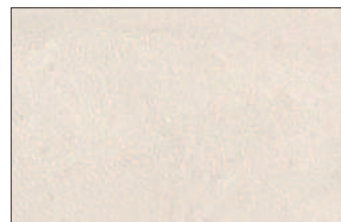
\*\*\*\*1410 BIANCO



\*\*\*\*1420 BIANCO



\*\*\*\*1430 BIANCO



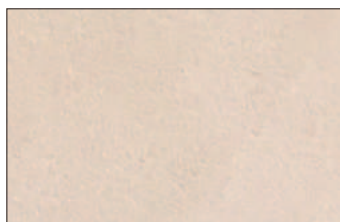
\*\*\*\*1440 BIANCO



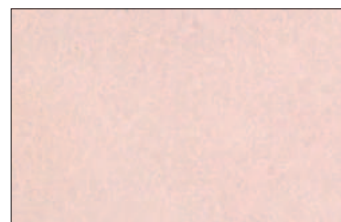
\*\*\*\*0060 F05 14-P



\*\*\*\*0160 F05 24-P



\*\*\*\*0260 F05 102-P



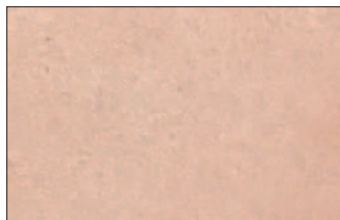
\*\*\*\*0850 F05 302-P



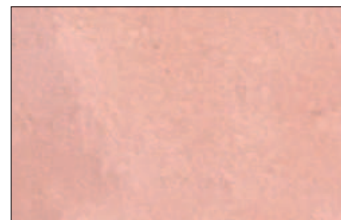
\*\*\*\*0080 F05 44-P



\*\*\*\*0180 F05 54-P



\*\*\*\*0280 F05 294-P



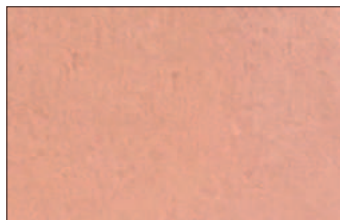
\*\*\*\*0870 F05 324-P



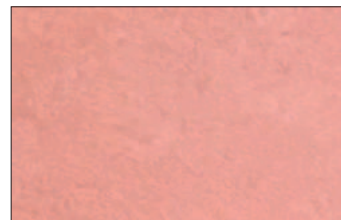
\*\*\*\*0740 F05 1088-P



\*\*\*\*1200 F05 1144-D



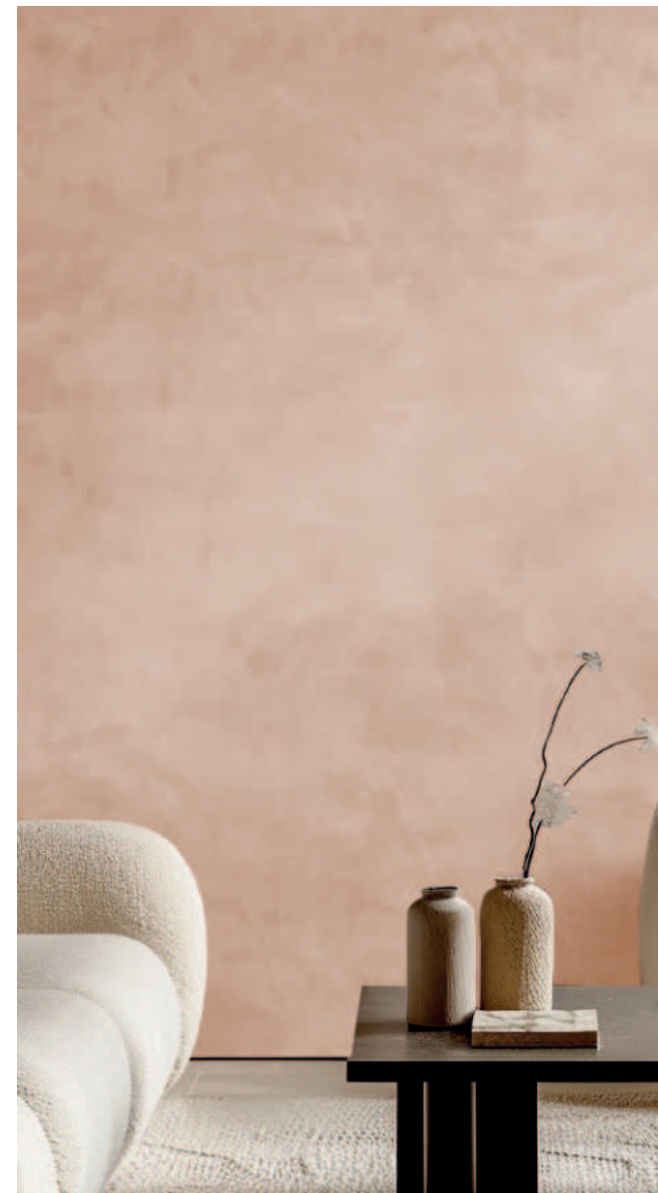
\*\*\*\*0290 F05 312-P



\*\*\*\*0880 F05 326-P

Tutti i colori presenti in catalogo possono essere realizzati in: **Velluto Fiorentino | Montenapoleone | Vanesia | Seta D'Autore | Moquette.**  
 All the colors in the catalog can be made in | Toutes les couleurs du catalogue peuvent être réalisées en | Todos los colores del catálogo se pueden realizar en:  
**Velluto Fiorentino | Montenapoleone | Vanesia | Seta D'Autore | Moquette.**

Fabrics | Italian Elegance



Prodotti utilizzati: Seta D'Autore  
 Colore: cod. **A6700270**

# VANESIA

## THE DESIGN OF IRIDESCENT EFFECT

- IT** Rivestimento decorativo a pennello che si distingue per la bellezza del suo effetto luminoso e cangiante. Crea superfici che catturano la luce in modo unico, aggiungendo profondità e interesse visivo agli spazi interni.
- EN** Decorative brush-on coating that stands out for the beauty of its luminous and iridescent effect. Create surfaces that capture light in a unique way, adding depth and visual interest to interior spaces.
- FR** Revêtement décoratif au pinceau qui se distingue par la beauté de son effet lumineux et irisé. Créez des surfaces qui captent la lumière d'une manière unique, ajoutant de la profondeur et un intérêt visuel aux espaces intérieurs.
- SP** Revestimiento decorativo a pincel que destaca por la belleza de su efecto luminoso y irisado. Cree superficies que capturen la luz de una manera única, agregando profundidad e interés visual a los espacios interiores.

**Il suo utilizzo è indicato per:** Rivestimenti interni | Internal coverings | Revêtements internes | Revestimientos internos



Vanesia: cod. A7801340 F05 1204-P

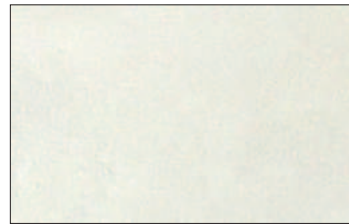
Un fascino contemporaneo e suggestivo.

*A refined and at the same time essential style.*

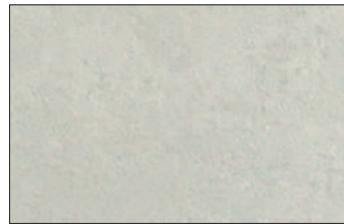


Vanesia: cod. A7801340

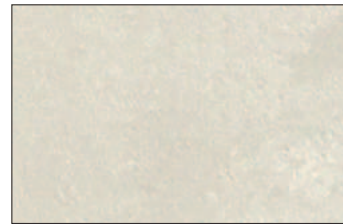
## COLOR SELECTION | PINK MAISON



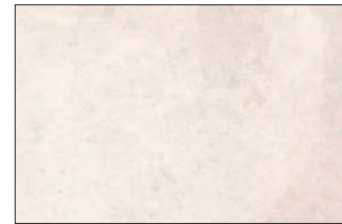
\*\*\*\*1260 BIANCO



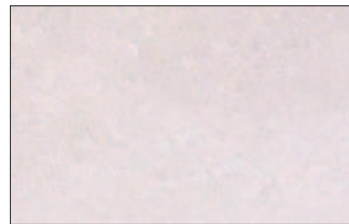
\*\*\*\*0400 F05 132-P



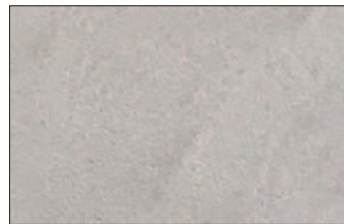
\*\*\*\*1520 BIANCO



\*\*\*\*1540 BIANCO



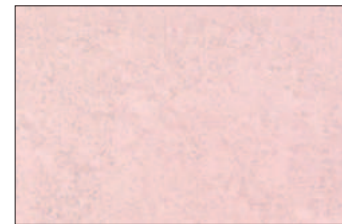
\*\*\*\*0310 F05 132-P



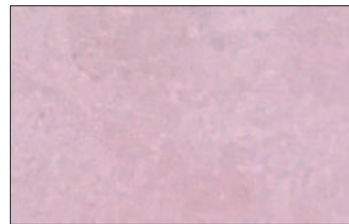
\*\*\*\*0410 F05 896-D



\*\*\*\*0550 F05 84-P



\*\*\*\*0800 F05 136-P



\*\*\*\*0330 F05 106-P



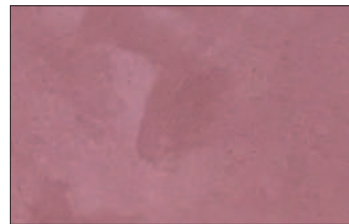
\*\*\*\*0420 F05 894-P



\*\*\*\*0630 F05 896-P



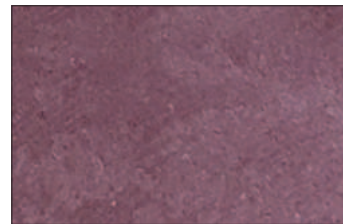
\*\*\*\*0820 F05 320-P



\*\*\*\*0350 F05 134-P



\*\*\*\*1510 F05 914-P



\*\*\*\*0620 F05 926-P



\*\*\*\*0830 F05 936-P

Tutti i colori presenti in catalogo possono essere realizzati in: **Velluto Fiorentino | Montenapoleone | Vanesia | Seta D'Autore | Moquette.**  
 All the colors in the catalog can be made in | Toutes les couleurs du catalogue peuvent être réalisées en | Todos los colores del catálogo se pueden realizar en:  
**Velluto Fiorentino | Montenapoleone | Vanesia | Seta D'Autore | Moquette.**

Fabrics | Italian Elegance



Prodotti utilizzati: **Vanesia**  
 Colore: cod. **A7800830**

# MOQUETTE

## THE DESIGN OF BRIGHT CARPET EFFECT

- IT** Rivestimento per interni che richiama l'eleganza della moquette ma conferendole un tocco moderno grazie alla sua texture vellutata e all'effetto discromico, che gioca su sottili variazioni di colore.
- EN** Indoor covering that allows to create multiple effects from delicate reliefs that recalls the elegance of carpet but gives it a modern touch thanks to its velvety texture and dischromic effect, which plays on subtle color variations.
- FR** Revêtement intérieur qui rappelle l'élégance du tapis mais lui donne une touche moderne grâce à sa texture veloutée et son effet dischromique, qui joue sur de subtiles variations de couleurs.
- SP** Revestimiento interior que recuerda la elegancia de la alfombra pero le da un toque moderno gracias a su textura aterciopelada y su efecto discrómico, que juega con sutiles variaciones cromáticas.

**Il suo utilizzo è indicato per:** Ideale per pavimenti e pareti interni | interior floors and walls | sols et murs intérieurs | pisos y paredes interiores



Moquette: cod. A3150670 F05 178-P

Una fusione elegante  
di comfort e lusso.

*A sophisticated fusion  
of comfort and luxury.*



Moquette: cod. A3150670

## COLOR SELECTION | NATURE SHADES



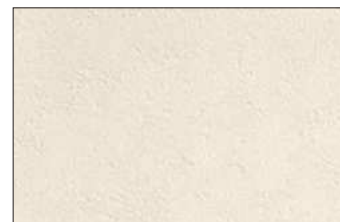
\*\*\*\*0910 F05 142-P



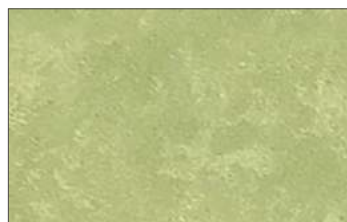
\*\*\*\*1550 F05 656-P



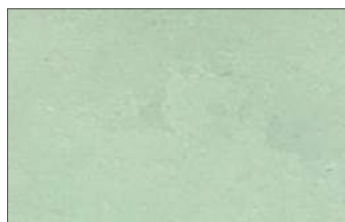
\*\*\*\*0600 F05 152-P



\*\*\*\*0500 F05 152-P



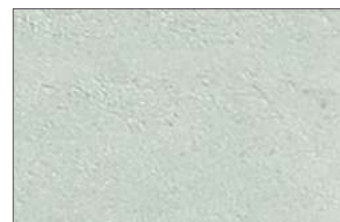
\*\*\*\*0920 F05 152-P



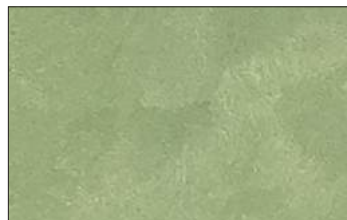
\*\*\*\*1560 F05 758-P



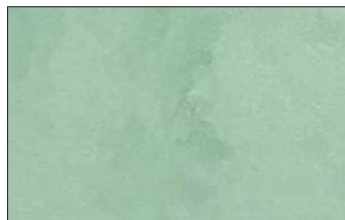
\*\*\*\*0610 F05 660-P



\*\*\*\*0510 F05 172-P



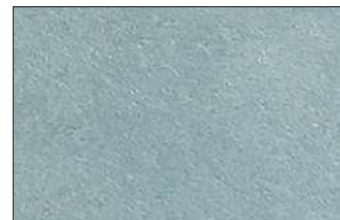
\*\*\*\*0940 F05 182-P



\*\*\*\*1570 F05 666-P



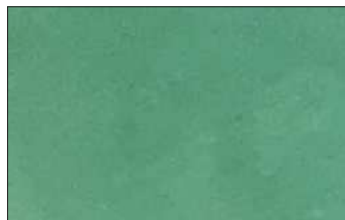
\*\*\*\*0570 F05 688-P



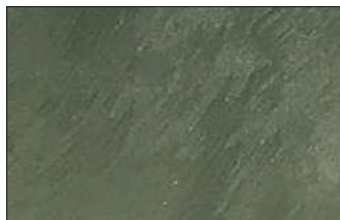
\*\*\*\*0530 F05 676-P



\*\*\*\*0950 F05 570-P



\*\*\*\*1590 F05 686-P



\*\*\*\*1600 F05 708-P



\*\*\*\*0540 F05 686-P

Tutti i colori presenti in catalogo possono essere realizzati in: **Velluto Fiorentino | Montnapoleone | Vanesia | Seta D'Autore | Moquette.**  
 All the colors in the catalog can be made in | Toutes les couleurs du catalogue peuvent être réalisées en | Todos los colores del catálogo se pueden realizar en:  
**Velluto Fiorentino | Montnapoleone | Vanesia | Seta D'Autore | Moquette.**

Fabrics | Italian Elegance



Prodotti utilizzati: Moquette  
 Colore: cod. A3150540

# FABRICS

## SOLUZIONI A CONFRONTO

	PARETI WALL	PAVIMENTI FLOOR	PENNELLO BRUSH	SPATOLA TROWEL	RESA/MQ YEALD/MQ
<u>VELLUTO FIORENTINO VELVET   EFFECT</u>	✓	-	-	✓	4 - 5 mq/lt
<u>MONTENAPOLEONE DAMASK   EFFECT</u>	✓	-	-	✓	6 - 9 mq/lt
<u>SETA D'AUTORE SILKY   EFFECT</u>	✓	-	-	✓	4 - 5 mq/lt
<u>VANESIA IRIDESCENT   EFFECT</u>	✓	-	✓	-	9 - 10 mq/lt
<u>MOQUETTE VELVET   EFFECT</u>	✓	✓	-	✓	3 - 5 mq/lt   2 mani



PRODOTTI  
VOC FREE  
VOC FREE PRODUCT



DESIGN  
VERSATILE  
VERSATILE DESIGN



APPLICABILE  
SPATOLA | PENNELLO  
TROWEL | BRUSH



APPLICABILE  
INTERNO  
INDOOR



ELEVATA  
LAVORABILITÀ  
HIGH WORKABILITY



COLORI  
DI CARTELLA  
COLOR CHART

VELLUTO FIORENTINO  
VELVET | DESIGN

MONTENAPOLEONE  
DAMASK | DESIGN

SETA D'AUTORE  
SILKY | DESIGN

VANESIA  
IRIDESCENT | DESIGN

MOQUETTE  
CARPET | DESIGN



A1680790

F05 1084-P



A1450790

F05 1084-P



A6700790

F05 1084-P



A7800790

F05 1084-P



A3150790

F05 1084-P

FABRICS COLOR CHART

Gli asterischi presenti nel codice colore, corrispondono al numero identificativo del prodotto (\*\*\*\*). Scegliere il prefisso corrispondente al prodotto che si desidera colorare.

The asterisks in the color code correspond to the product identification number (\*\*\*\*). Choose the prefix corresponding to the product you want to colour. | **A168 VELLUTO FIORENTINO - VELVET | A145 MONTANAPOLEONE - DAMASK | A670 SETA D'AUTORE - SILKY | A780 VANESIA - IRIDESCENT | A315 MOQUETTE - CARPET** |

Per proteggere le superfici realizzate con Moquette, applicare Microvetro BI Opaco-Lucido o 30 gloss; all'interno dei bagni applicare prima una mano di Microvetro BI lucido e successivamente procedere con la finitura protettiva desiderata | To protect surfaces made with Moquette, apply Microvetro BI matt - polish or 30 gloss; inside the bathrooms, apply a first coat of polish and then proceed with the desired protective finish.

Il codice alfanumerico ( F05 \*\*\*-P) posto al lato del codice colore, corrisponde al fondo da utilizzare ed è diverso per ogni colore della cartella | The alphanumeric code (F05 \*\*\*-P) placed next to the color code correspond to the code of the primer to be used and is different for each color in the color chart.

Per ulteriori informazioni tecniche sul ciclo applicativo dei singoli prodotti è necessario consultare la scheda tecnica di riferimento scaricabile sul sito [www.loggia.it](http://www.loggia.it)

For further technical information on the application system of the individual products it is necessary to consult the reference technical data sheet which can be downloaded from the website [www.loggia.it](http://www.loggia.it)



LOGGIA INDUSTRIA VERNICI s.r.l  
Via Santo Stefano 4/6, B.go S. Donato, Sabaudia (Lt) - 04016  
commerciale@loggia.it | info@loggia.it | www.loggia.it  
Tel. (+39) 0773 562212